

## **Appendix D. Summary of Chinese White Dolphin Monitoring Results**

## CWD Small Vessel Line-transect Survey

## Survey Effort Data

DATE	AREA	BEAU	KM SEARCHED	SEASON	VESSEL	TYPE
11-Jul-17	AW	2	4.860	SUMMER	32166	3RS ET
11-Jul-17	WL	2	12.725	SUMMER	32166	3RS ET
11-Jul-17	WL	3	13.429	SUMMER	32166	3RS ET
11-Jul-17	WL	4	2.400	SUMMER	32166	3RS ET
11-Jul-17	SWL	2	1.616	SUMMER	32166	3RS ET
11-Jul-17	SWL	3	3.150	SUMMER	32166	3RS ET
12-Jul-17	NWL	1	16.730	SUMMER	32166	3RS ET
12-Jul-17	NWL	2	27.170	SUMMER	32166	3RS ET
12-Jul-17	NWL	3	30.520	SUMMER	32166	3RS ET
12-Jul-17	NWL	4	0.700	SUMMER	32166	3RS ET
13-Jul-17	NEL	2	4.253	SUMMER	32166	3RS ET
13-Jul-17	NEL	3	27.477	SUMMER	32166	3RS ET
13-Jul-17	NEL	4	14.770	SUMMER	32166	3RS ET
14-Jul-17	NWL	2	29.960	SUMMER	32166	3RS ET
14-Jul-17	NWL	3	33.840	SUMMER	32166	3RS ET
14-Jul-17	NWL	4	9.330	SUMMER	32166	3RS ET
20-Jul-17	SWL	2	9.500	SUMMER	32166	3RS ET
20-Jul-17	SWL	3	39.350	SUMMER	32166	3RS ET
20-Jul-17	SWL	4	12.780	SUMMER	32166	3RS ET
20-Jul-17	SWL	5	1.030	SUMMER	32166	3RS ET
21-Jul-17	AW	2	3.510	SUMMER	32166	3RS ET
21-Jul-17	AW	3	1.320	SUMMER	32166	3RS ET
21-Jul-17	WL	2	13.854	SUMMER	32166	3RS ET
21-Jul-17	WL	3	10.040	SUMMER	32166	3RS ET
21-Jul-17	WL	4	7.050	SUMMER	32166	3RS ET
21-Jul-17	SWL	3	1.970	SUMMER	32166	3RS ET
21-Jul-17	SWL	4	4.660	SUMMER	32166	3RS ET
25-Jul-17	NEL	2	31.060	SUMMER	32166	3RS ET
25-Jul-17	NEL	3	15.740	SUMMER	32166	3RS ET
26-Jul-17	SWL	2	41.124	SUMMER	32166	3RS ET
26-Jul-17	SWL	3	11.530	SUMMER	32166	3RS ET
26-Jul-17	SWL	4	9.430	SUMMER	32166	3RS ET
04-Aug-17	NWL	1	11.000	SUMMER	32166	3RS ET
04-Aug-17	NWL	2	20.300	SUMMER	32166	3RS ET
04-Aug-17	NWL	3	42.293	SUMMER	32166	3RS ET
04-Aug-17	NWL	4	0.300	SUMMER	32166	3RS ET
08-Aug-17	NWL	3	16.760	SUMMER	32166	3RS ET
08-Aug-17	NWL	4	57.140	SUMMER	32166	3RS ET
08-Aug-17	NWL	5	0.800	SUMMER	32166	3RS ET
09-Aug-17	NEL	2	29.120	SUMMER	32166	3RS ET
09-Aug-17	NEL	3	11.010	SUMMER	32166	3RS ET
09-Aug-17	NEL	4	4.470	SUMMER	32166	3RS ET
09-Aug-17	NEL	5	2.600	SUMMER	32166	3RS ET
14-Aug-17	AW	3	1.820	SUMMER	32166	3RS ET
14-Aug-17	AW	4	2.840	SUMMER	32166	3RS ET
14-Aug-17	WL	3	12.390	SUMMER	32166	3RS ET
14-Aug-17	WL	4	20.110	SUMMER	32166	3RS ET

DATE	AREA	BEAU	KM SEARCHED	SEASON	VESSEL	TYPE
14-Aug-17	SWL	3	12.400	SUMMER	32166	3RS ET
15-Aug-17	SWL	2	24.510	SUMMER	32166	3RS ET
15-Aug-17	SWL	3	29.836	SUMMER	32166	3RS ET
15-Aug-17	SWL	4	0.740	SUMMER	32166	3RS ET
21-Aug-17	SWL	1	2.600	SUMMER	32166	3RS ET
21-Aug-17	SWL	2	48.228	SUMMER	32166	3RS ET
21-Aug-17	SWL	3	7.160	SUMMER	32166	3RS ET
21-Aug-17	SWL	4	1.530	SUMMER	32166	3RS ET
22-Aug-17	AW	0	1.880	SUMMER	32166	3RS ET
22-Aug-17	AW	1	2.410	SUMMER	32166	3RS ET
22-Aug-17	WL	1	9.997	SUMMER	32166	3RS ET
22-Aug-17	WL	2	9.174	SUMMER	32166	3RS ET
22-Aug-17	WL	3	12.400	SUMMER	32166	3RS ET
22-Aug-17	WL	4	0.900	SUMMER	32166	3RS ET
22-Aug-17	SWL	1	1.940	SUMMER	32166	3RS ET
22-Aug-17	SWL	2	0.252	SUMMER	32166	3RS ET
22-Aug-17	SWL	3	3.154	SUMMER	32166	3RS ET
25-Aug-17	NEL	1	1.900	SUMMER	32166	3RS ET
25-Aug-17	NEL	2	34.960	SUMMER	32166	3RS ET
25-Aug-17	NEL	3	9.940	SUMMER	32166	3RS ET
11-Sep-17	SWL	1	9.330	AUTUMN	32166	3RS ET
11-Sep-17	SWL	2	51.970	AUTUMN	32166	3RS ET
12-Sep-17	SWL	3	5.564	AUTUMN	32166	3RS ET
12-Sep-17	SWL	4	1.334	AUTUMN	32166	3RS ET
12-Sep-17	WL	2	23.366	AUTUMN	32166	3RS ET
12-Sep-17	WL	3	8.530	AUTUMN	32166	3RS ET
12-Sep-17	WL	4	0.590	AUTUMN	32166	3RS ET
12-Sep-17	AW	2	4.850	AUTUMN	32166	3RS ET
13-Sep-17	NEL	1	5.293	AUTUMN	32166	3RS ET
13-Sep-17	NEL	2	41.007	AUTUMN	32166	3RS ET
13-Sep-17	NEL	3	1.200	AUTUMN	32166	3RS ET
14-Sep-17	NEL	2	21.130	AUTUMN	32166	3RS ET
14-Sep-17	NEL	3	24.570	AUTUMN	32166	3RS ET
14-Sep-17	NEL	4	1.500	AUTUMN	32166	3RS ET
18-Sep-17	NWL	1	1.020	AUTUMN	32166	3RS ET
18-Sep-17	NWL	2	26.330	AUTUMN	32166	3RS ET
18-Sep-17	NWL	3	19.210	AUTUMN	32166	3RS ET
18-Sep-17	NWL	4	22.550	AUTUMN	32166	3RS ET
19-Sep-17	AW	2	2.890	AUTUMN	32166	3RS ET
19-Sep-17	AW	3	1.840	AUTUMN	32166	3RS ET
19-Sep-17	WL	1	3.460	AUTUMN	32166	3RS ET
19-Sep-17	WL	2	4.998	AUTUMN	32166	3RS ET
19-Sep-17	WL	3	7.760	AUTUMN	32166	3RS ET
19-Sep-17	WL	4	13.081	AUTUMN	32166	3RS ET
19-Sep-17	SWL	2	3.010	AUTUMN	32166	3RS ET
19-Sep-17	SWL	3	3.250	AUTUMN	32166	3RS ET
19-Sep-17	SWL	4	5.750	AUTUMN	32166	3RS ET
20-Sep-17	SWL	2	13.420	AUTUMN	32166	3RS ET
20-Sep-17	SWL	3	38.810	AUTUMN	32166	3RS ET

<b>DATE</b>	<b>AREA</b>	<b>BEAU</b>	<b>KM SEARCHED</b>	<b>SEASON</b>	<b>VESSEL</b>	<b>TYPE</b>
20-Sep-17	SWL	4	4.360	AUTUMN	32166	3RS ET
21-Sep-17	NWL	1	4.500	AUTUMN	32166	3RS ET
21-Sep-17	NWL	2	67.480	AUTUMN	32166	3RS ET

## CWD Small Vessel Line-transect Survey

## Sighting Data

DATE	STG #	TIME	CWD/FP	GP SZ	AREA	BEAU	PSD	EFFORT	TYPE	DEC LAT	DEC LON	SEASON	BOAT ASSOC.
11-Jul-17	1	1038	CWD	2	WL	2	82	ON	3RS ET	22.2668	113.8592	SUMMER	NONE
11-Jul-17	2	1055	CWD	8	WL	2	19	ON	3RS ET	22.2608	113.8536	SUMMER	NONE
11-Jul-17	3	1133	CWD	2	WL	3	351	ON	3RS ET	22.2498	113.8403	SUMMER	NONE
11-Jul-17	4	1144	CWD	1	WL	2	8	ON	3RS ET	22.2500	113.8500	SUMMER	NONE
11-Jul-17	5	1159	CWD	4	WL	2	726	ON	3RS ET	22.2432	113.8488	SUMMER	NONE
11-Jul-17	6	1216	CWD	1	WL	2	17	ON	3RS ET	22.2414	113.8463	SUMMER	NONE
11-Jul-17	7	1242	CWD	2	WL	3	11	ON	3RS ET	22.2279	113.8378	SUMMER	NONE
11-Jul-17	8	1259	CWD	2	WL	3	196	ON	3RS ET	22.2185	113.8137	SUMMER	NONE
11-Jul-17	9	1318	CWD	2	WL	3	16	ON	3RS ET	22.2143	113.8333	SUMMER	NONE
11-Jul-17	10	1350	CWD	7	WL	4	324	ON	3RS ET	22.1969	113.8397	SUMMER	NONE
11-Jul-17	11	1414	CWD	3	WL	4	157	ON	3RS ET	22.1864	113.8401	SUMMER	NONE
11-Jul-17	12	1435	CWD	4	SWL	2	118	ON	3RS ET	22.1903	113.8499	SUMMER	NONE
11-Jul-17	13	1506	CWD	4	SWL	2	299	ON	3RS ET	22.1883	113.8593	SUMMER	NONE
12-Jul-17	1	0950	CWD	2	NWL	1	70	ON	3RS ET	22.3715	113.8673	SUMMER	NONE
12-Jul-17	2	1316	CWD	1	NWL	3	102	ON	3RS ET	22.3998	113.8983	SUMMER	NONE
14-Jul-17	1	0953	CWD	1	NWL	3	351	ON	3RS ET	22.3615	113.8666	SUMMER	NONE
14-Jul-17	2	1048	CWD	2	NWL	2	890	ON	3RS ET	22.2773	113.8689	SUMMER	NONE
14-Jul-17	3	1210	CWD	1	NWL	2	169	ON	3RS ET	22.3909	113.8780	SUMMER	NONE
20-Jul-17	1	1412	CWD	2	SWL	3	319	ON	3RS ET	22.1776	113.8785	SUMMER	NONE
20-Jul-17	2	1457	CWD	1	SWL	3	2226	ON	3RS ET	22.1900	113.8678	SUMMER	NONE
20-Jul-17	3	1524	CWD	3	WL	2	N/A	OFF	3RS ET	22.2178	113.8339	SUMMER	NONE
21-Jul-17	1	1032	CWD	5	WL	2	20	ON	3RS ET	22.2649	113.8585	SUMMER	NONE
21-Jul-17	2	1131	CWD	2	WL	3	65	ON	3RS ET	22.2318	113.8372	SUMMER	NONE
21-Jul-17	3	1151	CWD	2	WL	2	17	ON	3RS ET	22.2288	113.8383	SUMMER	NONE
21-Jul-17	4	1208	CWD	2	WL	3	190	ON	3RS ET	22.2182	113.8138	SUMMER	NONE
21-Jul-17	5	1223	CWD	2	WL	4	27	ON	3RS ET	22.2139	113.8322	SUMMER	NONE
21-Jul-17	6	1243	CWD	1	WL	4	62	ON	3RS ET	22.2048	113.8383	SUMMER	NONE
21-Jul-17	7	1310	CWD	6	WL	3	27	ON	3RS ET	22.1956	113.8425	SUMMER	NONE
26-Jul-17	1	1026	CWD	1	WL	2	N/A	OFF	3RS ET	22.2362	113.8409	SUMMER	NONE
26-Jul-17	2	1033	CWD	2	WL	2	N/A	OFF	3RS ET	22.2183	113.8339	SUMMER	NONE
26-Jul-17	3	1045	CWD	2	SWL	2	N/A	OFF	3RS ET	22.1948	113.8509	SUMMER	NONE

DATE	STG #	TIME	CWD/FP	GP SZ	AREA	BEAU	PSD	EFFORT	TYPE	DEC LAT	DEC LON	SEASON	BOAT ASSOC.
26-Jul-17	4	1056	CWD	3	SWL	2	252	ON	3RS ET	22.1999	113.8684	SUMMER	NONE
26-Jul-17	5	1301	CWD	7	SWL	2	234	ON	3RS ET	22.2036	113.9083	SUMMER	NONE
26-Jul-17	6	1411	FP	2	SWL	3	87	ON	3RS ET	22.1534	113.9183	SUMMER	NONE
26-Jul-17	7	1437	CWD	2	SWL	3	711	ON	3RS ET	22.2040	113.9181	SUMMER	GILLNET
04-Aug-17	1	1202	CWD	2	NWL	3	41	ON	3RS ET	22.4075	113.8878	SUMMER	NONE
04-Aug-17	2	1322	CWD	3	NWL	3	42	ON	3RS ET	22.3735	113.8980	SUMMER	NONE
04-Aug-17	3	1339	CWD	3	NWL	1	3	ON	3RS ET	22.3782	113.8978	SUMMER	NONE
08-Aug-17	1	1305	CWD	2	NWL	4	N/A	OFF	3RS ET	22.3817	113.8981	SUMMER	NONE
14-Aug-17	1	1121	CWD	1	WL	3	98	ON	3RS ET	22.2321	113.8264	SUMMER	NONE
14-Aug-17	2	1242	CWD	2	WL	4	149	ON	3RS ET	22.1874	113.8301	SUMMER	NONE
14-Aug-17	3	1252	CWD	4	WL	4	N/A	OFF	3RS ET	22.1920	113.8425	SUMMER	NONE
14-Aug-17	4	1316	CWD	1	SWL	3	N/A	OFF	3RS ET	22.1906	113.8491	SUMMER	NONE
15-Aug-17	1	1029	CWD	1	SWL	2	303	ON	3RS ET	22.2108	113.9358	SUMMER	NONE
15-Aug-17	2	1131	CWD	1	SWL	3	182	ON	3RS ET	22.1818	113.9276	SUMMER	NONE
15-Aug-17	3	1255	CWD	5	SWL	2	146	ON	3RS ET	22.1784	113.9041	SUMMER	NONE
15-Aug-17	4	1338	CWD	1	SWL	3	1090	ON	3RS ET	22.1901	113.8967	SUMMER	NONE
15-Aug-17	5	1343	CWD	8	SWL	3	477	ON	3RS ET	22.1853	113.8973	SUMMER	NONE
15-Aug-17	6	1407	CWD	1	SWL	2	783	ON	3RS ET	22.1756	113.8969	SUMMER	NONE
15-Aug-17	7	1455	CWD	3	SWL	2	11	ON	3RS ET	22.1794	113.8876	SUMMER	NONE
21-Aug-17	1	1232	CWD	3	SWL	3	156	ON	3RS ET	22.1673	113.9050	SUMMER	GILLNET
21-Aug-17	2	1333	CWD	2	SWL	2	29	ON	3RS ET	22.1789	113.8982	SUMMER	NONE
21-Aug-17	3	1344	CWD	8	SWL	2	713	ON	3RS ET	22.1741	113.8972	SUMMER	NONE
21-Aug-17	4	1431	CWD	8	SWL	2	174	ON	3RS ET	22.1729	113.8875	SUMMER	NONE
21-Aug-17	5	1516	CWD	3	SWL	2	15	ON	3RS ET	22.1796	113.8786	SUMMER	NONE
21-Aug-17	6	1539	CWD	2	SWL	2	126	ON	3RS ET	22.1665	113.8688	SUMMER	NONE
21-Aug-17	7	1549	CWD	2	SWL	2	28	ON	3RS ET	22.1720	113.8690	SUMMER	NONE
22-Aug-17	1	0943	CWD	1	AW	1	87	ON	3RS ET	22.2965	113.8825	SUMMER	NONE
22-Aug-17	2	1031	CWD	1	WL	1	37	ON	3RS ET	22.2776	113.8518	SUMMER	NONE
22-Aug-17	3	1043	CWD	2	WL	1	6	ON	3RS ET	22.2684	113.8457	SUMMER	NONE
22-Aug-17	4	1059	CWD	2	WL	1	140	ON	3RS ET	22.2656	113.8585	SUMMER	NONE
22-Aug-17	5	1112	CWD	1	WL	1	189	ON	3RS ET	22.2609	113.8550	SUMMER	NONE
22-Aug-17	6	1127	CWD	6	WL	1	84	ON	3RS ET	22.2602	113.8396	SUMMER	NONE
22-Aug-17	7	1202	CWD	4	WL	2	149	ON	3RS ET	22.2419	113.8404	SUMMER	NONE

DATE	STG #	TIME	CWD/FP	GP SZ	AREA	BEAU	PSD	EFFORT	TYPE	DEC LAT	DEC LON	SEASON	BOAT ASSOC.
22-Aug-17	8	1326	CWD	1	WL	3	31	ON	3RS ET	22.1875	113.8419	SUMMER	NONE
22-Aug-17	9	1335	CWD	4	WL	2	376	ON	3RS ET	22.1865	113.8386	SUMMER	NONE
22-Aug-17	10	1408	CWD	3	SWL	3	182	ON	3RS ET	22.1718	113.8533	SUMMER	NONE
22-Aug-17	11	1432	CWD	4	SWL	2	210	ON	3RS ET	22.1748	113.8594	SUMMER	NONE
11-Sep-17	1	1131	CWD	1	SWL	2	83	ON	3RS ET	22.2054	113.9212	AUTUMN	NONE
11-Sep-17	2	1344	CWD	4	SWL	1	780	ON	3RS ET	22.1795	113.8881	AUTUMN	NONE
12-Sep-17	1	1045	CWD	1	SWL	4	93	ON	3RS ET	22.1932	113.8584	AUTUMN	NONE
12-Sep-17	2	1110	CWD	3	SWL	3	N/A	OFF	3RS ET	22.1814	113.8492	AUTUMN	NONE
12-Sep-17	3	1211	CWD	4	WL	2	53	ON	3RS ET	22.2150	113.8309	AUTUMN	NONE
12-Sep-17	4	1347	CWD	3	WL	2	60	ON	3RS ET	22.2608	113.8471	AUTUMN	NONE
12-Sep-17	5	1358	CWD	3	WL	2	107	ON	3RS ET	22.2640	113.8582	AUTUMN	NONE
18-Sep-17	1	1009	CWD	15	NWL	2	248	ON	3RS ET	22.3365	113.8679	AUTUMN	NONE
18-Sep-17	2	1211	CWD	2	NWL	2	151	ON	3RS ET	22.4006	113.8778	AUTUMN	NONE
18-Sep-17	3	1345	CWD	1	NWL	3	65	ON	3RS ET	22.4003	113.8976	AUTUMN	NONE
19-Sep-17	1	1020	CWD	6	WL	1	860	ON	3RS ET	22.2745	113.8488	AUTUMN	NONE
19-Sep-17	2	1106	CWD	4	WL	2	57	ON	3RS ET	22.2652	113.8578	AUTUMN	NONE
19-Sep-17	3	1126	CWD	2	WL	2	428	ON	3RS ET	22.2603	113.8454	AUTUMN	NONE
19-Sep-17	4	1134	CWD	1	WL	3	30	ON	3RS ET	22.2573	113.8371	AUTUMN	NONE
19-Sep-17	5	1145	CWD	1	WL	3	18	ON	3RS ET	22.2497	113.8429	AUTUMN	NONE
19-Sep-17	6	1202	CWD	3	WL	3	73	ON	3RS ET	22.2408	113.8386	AUTUMN	NONE
19-Sep-17	7	1258	CWD	1	WL	4	113	ON	3RS ET	22.2053	113.8363	AUTUMN	NONE
19-Sep-17	8	1420	CWD	1	SWL	2	261	ON	3RS ET	22.2004	113.8659	AUTUMN	NONE
20-Sep-17	1	1215	CWD	7	SWL	2	305	ON	3RS ET	22.1643	113.9011	AUTUMN	NONE
20-Sep-17	2	1332	CWD	5	SWL	3	90	ON	3RS ET	22.1576	113.8969	AUTUMN	NONE
20-Sep-17	3	1434	CWD	3	SWL	2	496	ON	3RS ET	22.2053	113.8777	AUTUMN	NONE
20-Sep-17	4	1534	CWD	3	SWL	3	N/A	OFF	3RS ET	22.1931	113.8450	AUTUMN	NONE
21-Sep-17	1	0952	CWD	1	NWL	2	1308	ON	3RS ET	22.3786	113.8681	AUTUMN	NONE
21-Sep-17	2	1005	CWD	1	NWL	2	N/A	OFF	3RS ET	22.3685	113.8679	AUTUMN	NONE
21-Sep-17	3	1148	CWD	1	NWL	2	284	ON	3RS ET	22.3730	113.8773	AUTUMN	NONE
21-Sep-17	4	1204	CWD	2	NWL	2	124	ON	3RS ET	22.3901	113.8784	AUTUMN	NONE







Abbreviations: STG# = Sighting Number; GP SZ = Dolphin Group Size; BEAU = Beaufort Sea State; PSD = Perpendicular Distance (in metres); N/A = Not Applicable; DEC LAT = Latitude (WGS84 in Decimal), DEC LON = Longitude (WGS84 in Decimal); BOAT ASSOC. = Fishing Boat Association

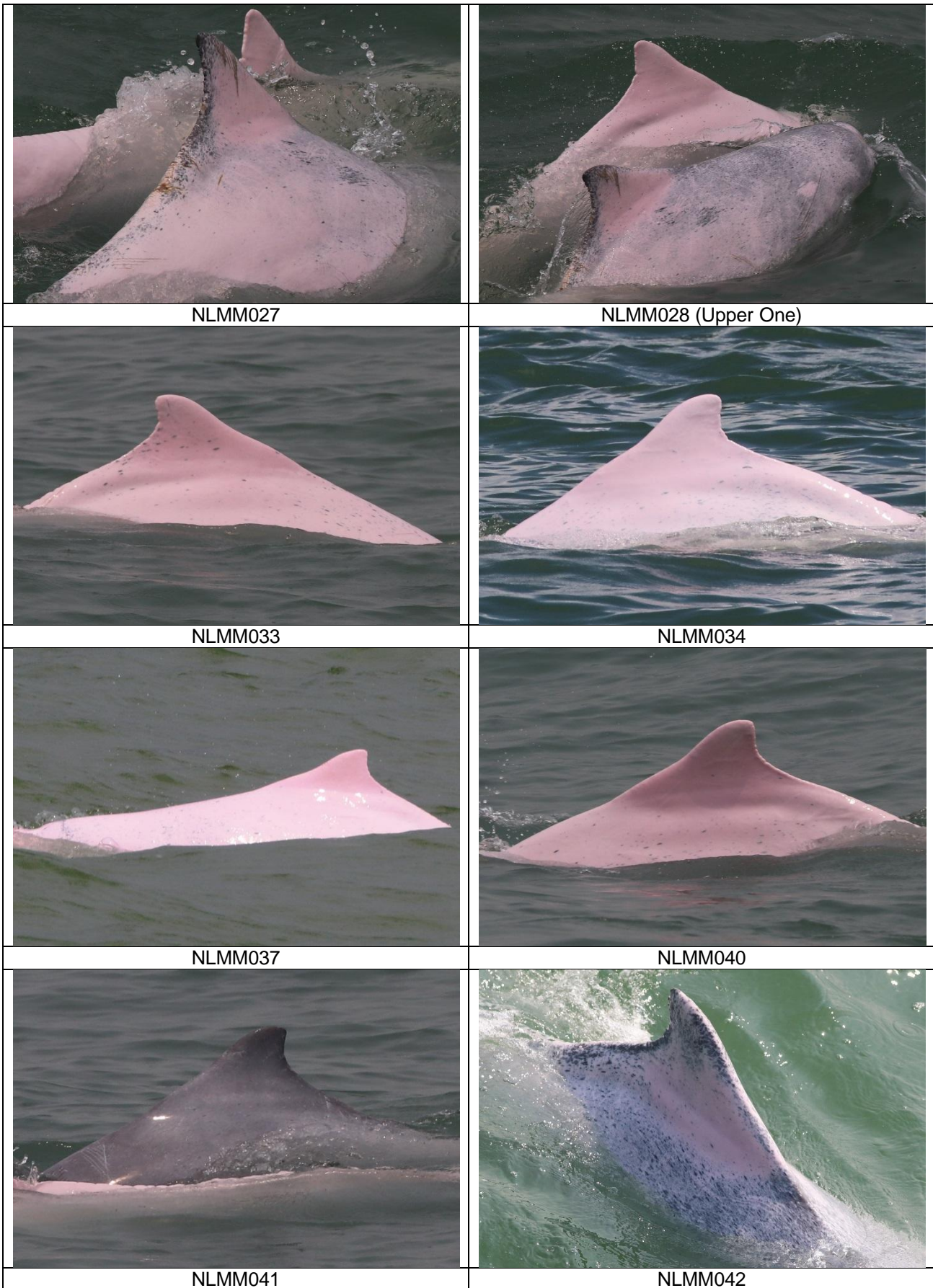
Sighting data of finless porpoise (FP) are presented for reference only. No relevant figure or text will be mentioned in the quarterly EM&A report. All FP sightings are excluded in calculation.



CWD Small Vessel Line-transect Survey

Photo Identification

	
NLMM005	NLMM013
	
NLMM019	NLMM020
	
NLMM022	NLMM023





NLMM050



NLMM051



NLMM052



NLMM053



SLMM003



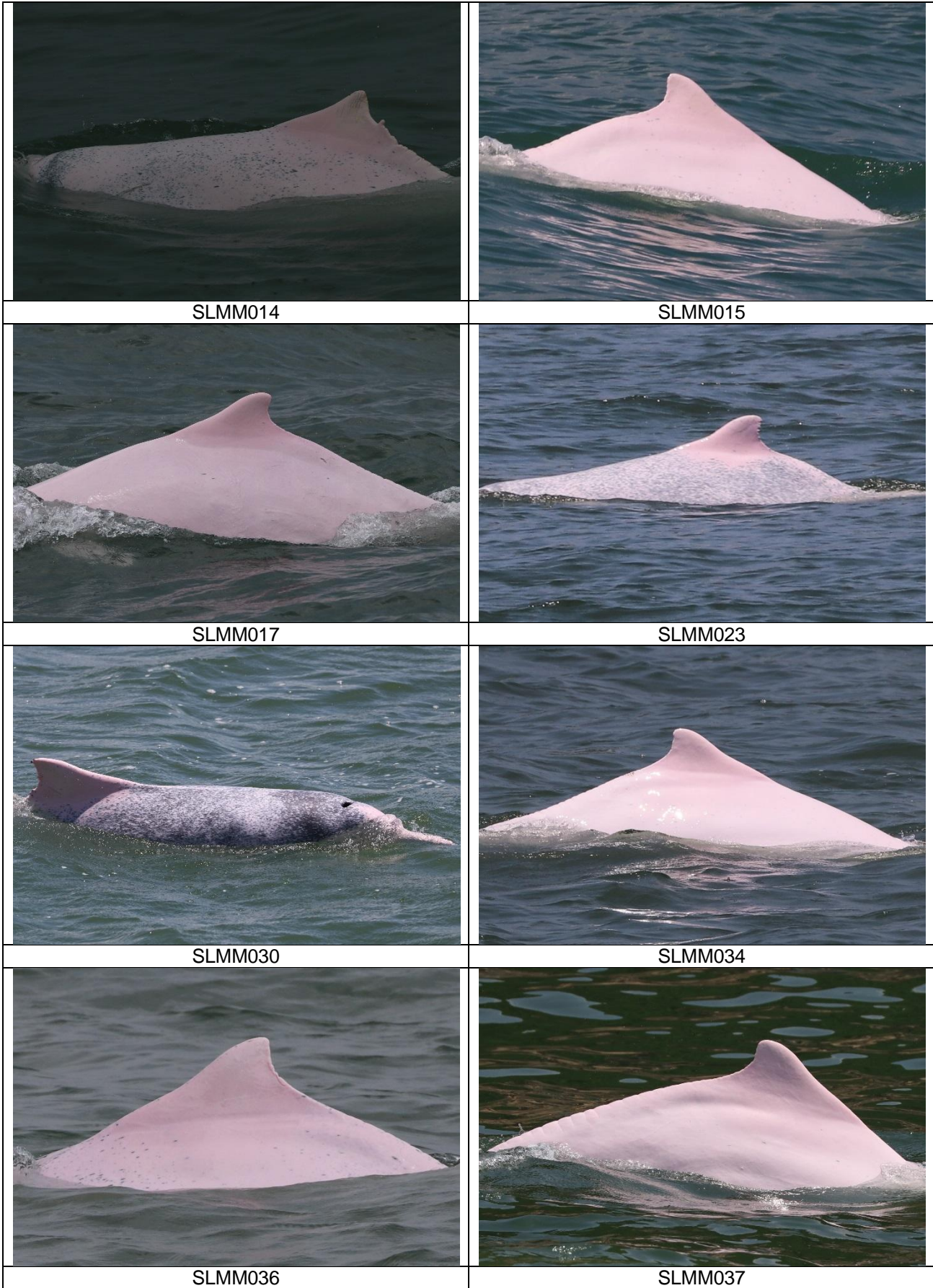
SLMM010

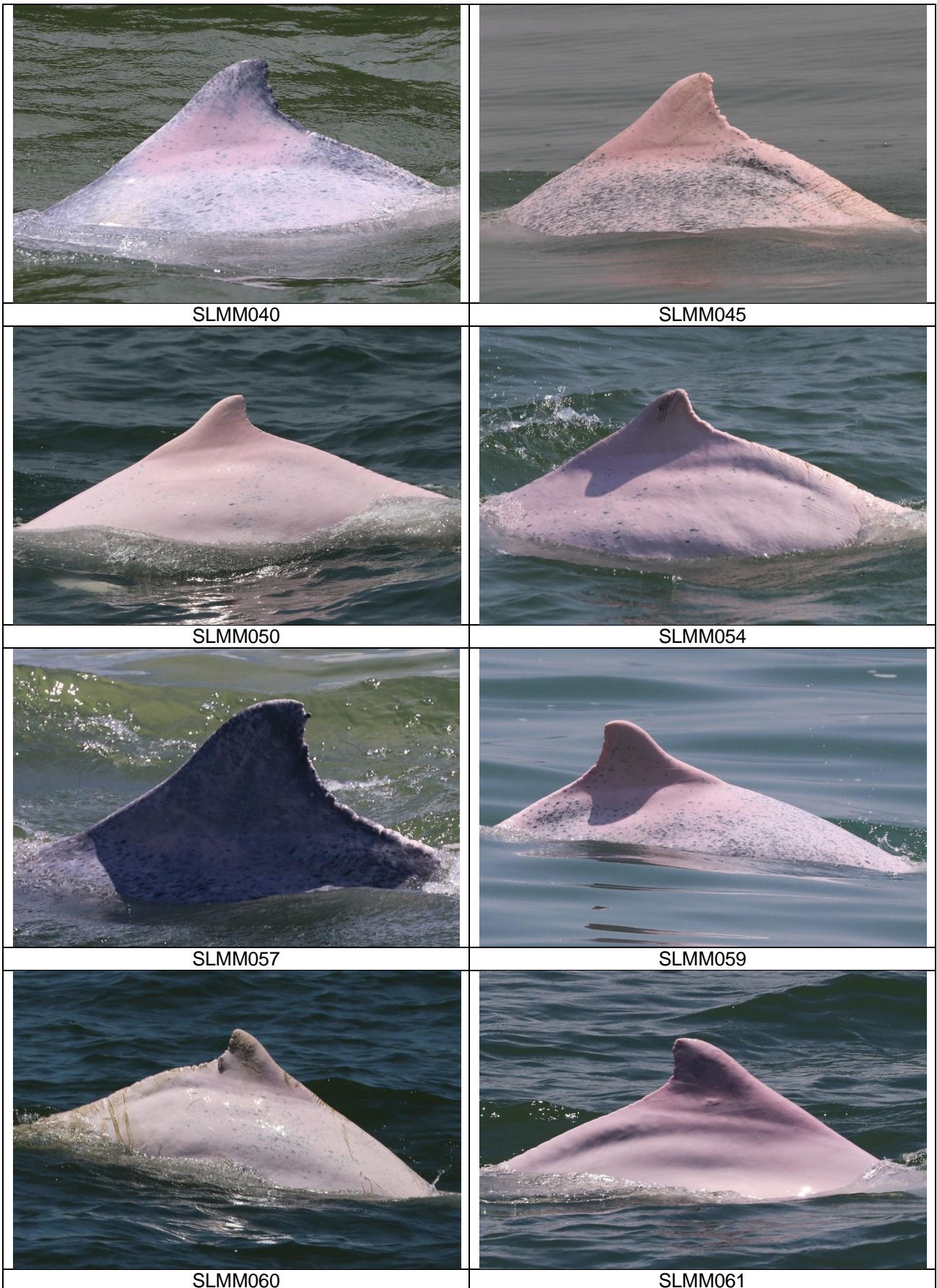


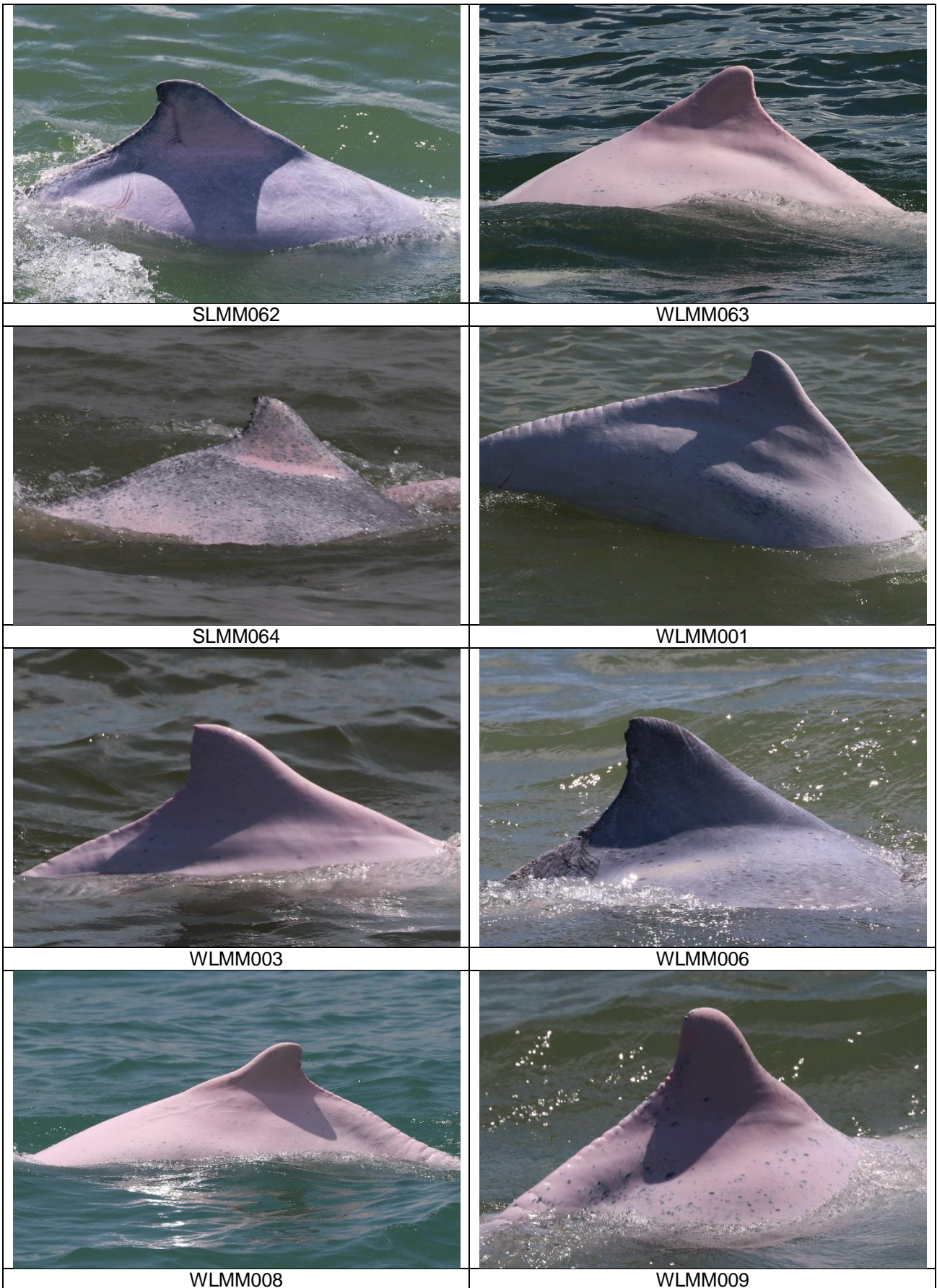
SLMM011



SLMM012









WLM011



WLM013



WLM015



WLM019



WLM020



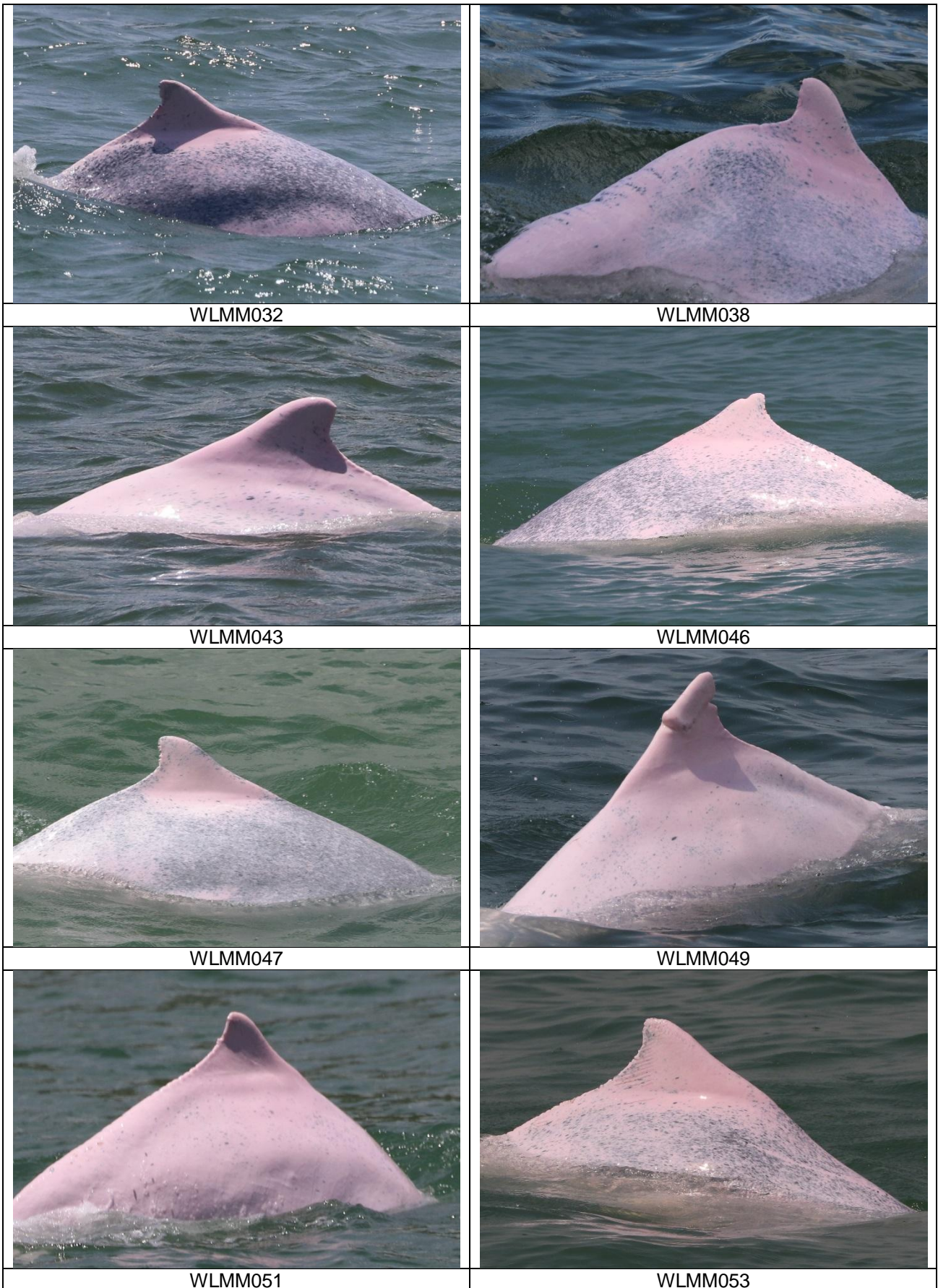
WLM027



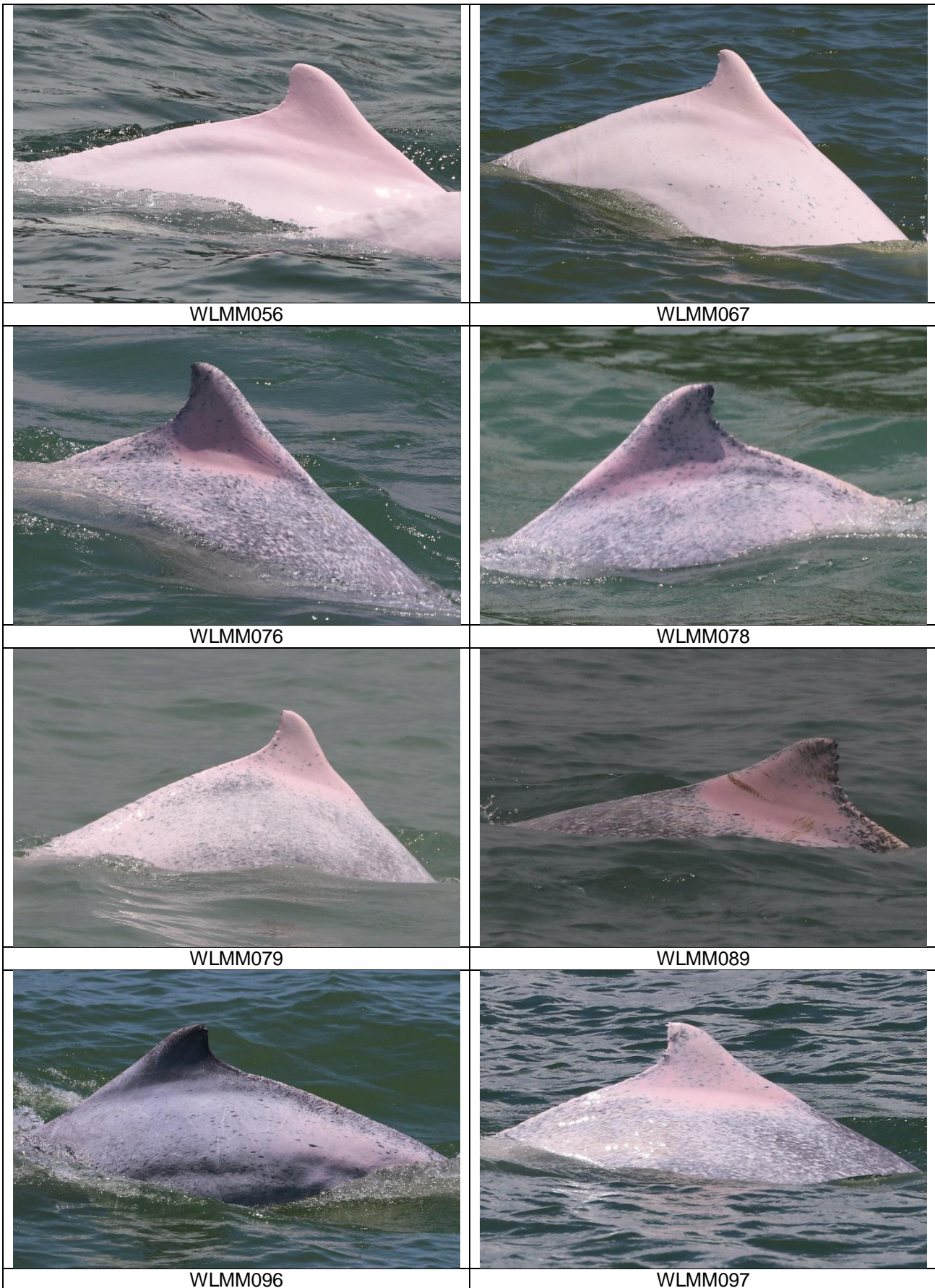
WLM028



WLM029









WLMM098



WLMM099



WLMM100



WLMM101



WLMM102



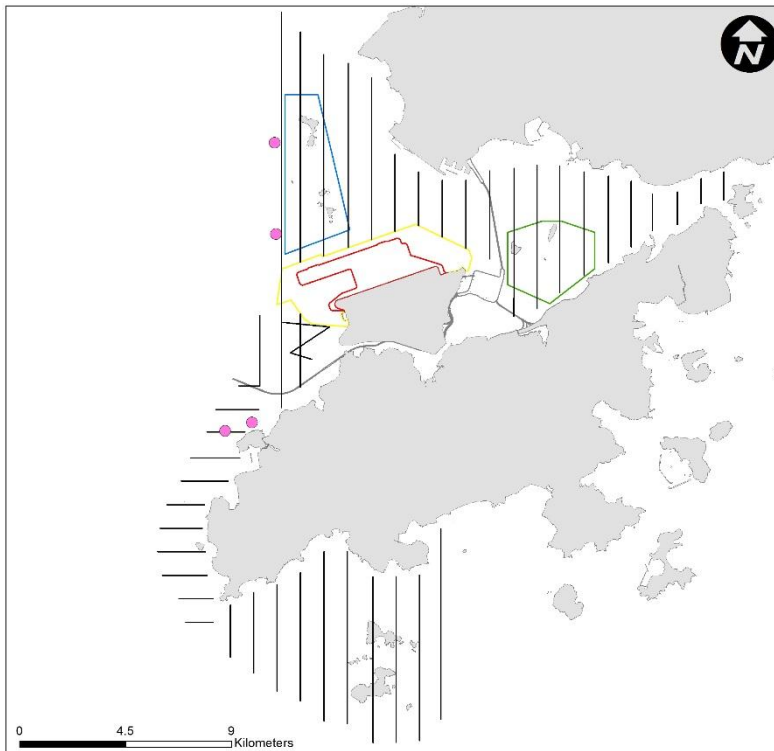
WLMM103

**CWD Small Vessel Line-transect Survey**

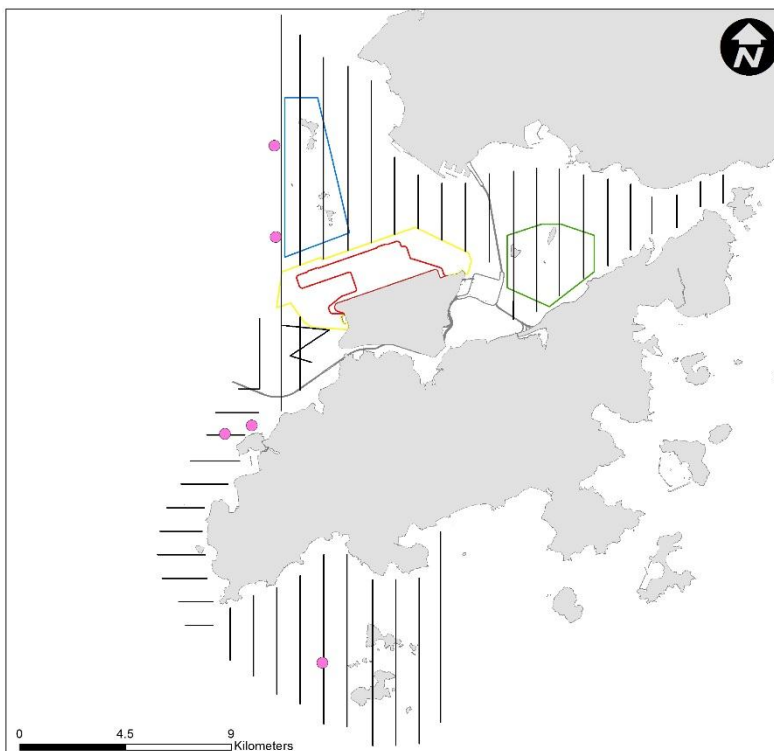
**Photo Identification – Re-sighting Locations**

[Pink circle: Sighting locations of individual dolphin, White line: Vessel survey transects, Blue polygon: Sha Chau and Lung Kwu Chau Marine Park (SCLKCMP), Green polygon: Brothers Marine Park (BMP), Red polygon: 3RS land-formation footprint, Yellow line: 3RS temporary works area boundary]

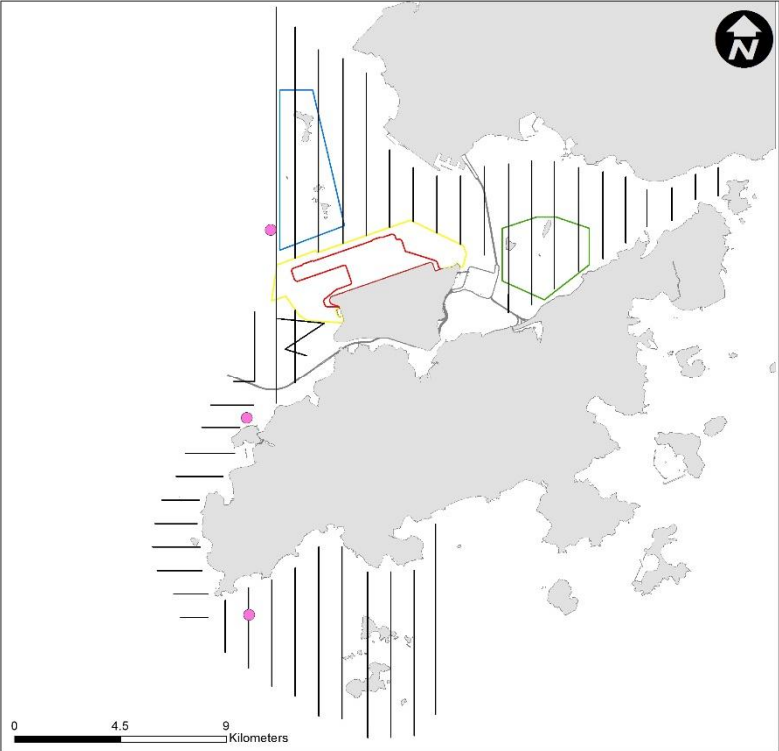
NLMM019



NLMM020



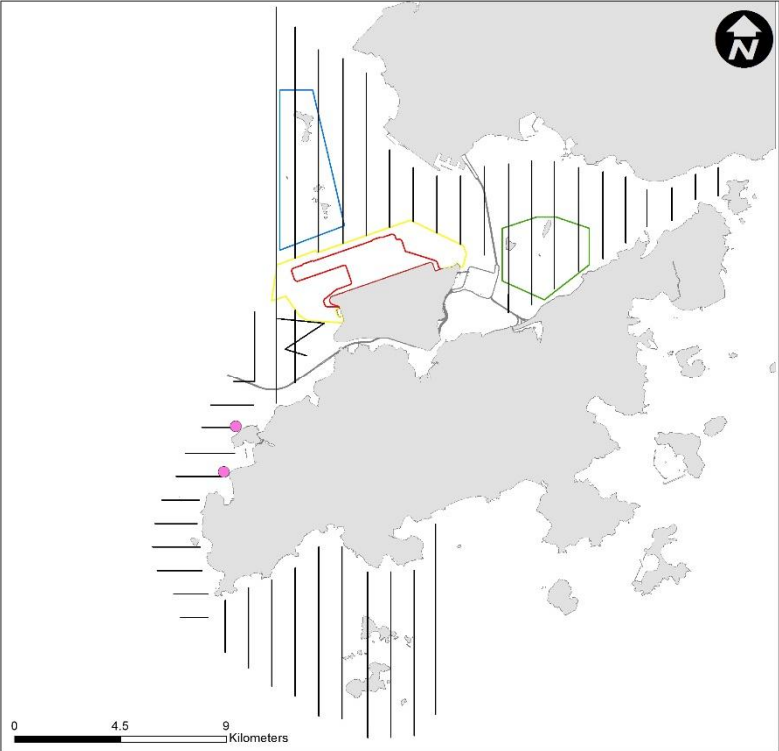
NLMM023



NLMM033



NLMM034



NLMM051



NLMM052



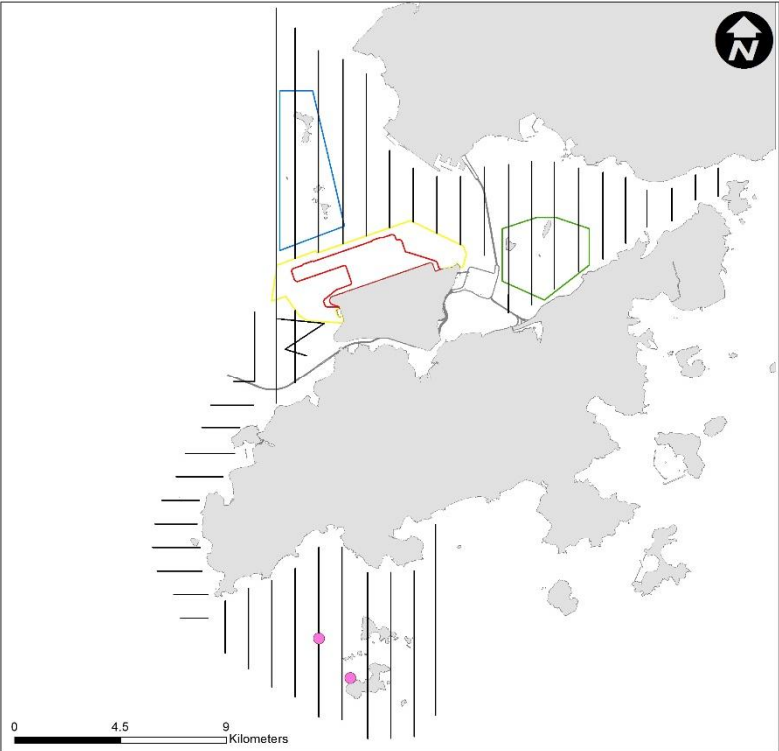
SLMM012



SLMM015



SLMM017



SLMM023

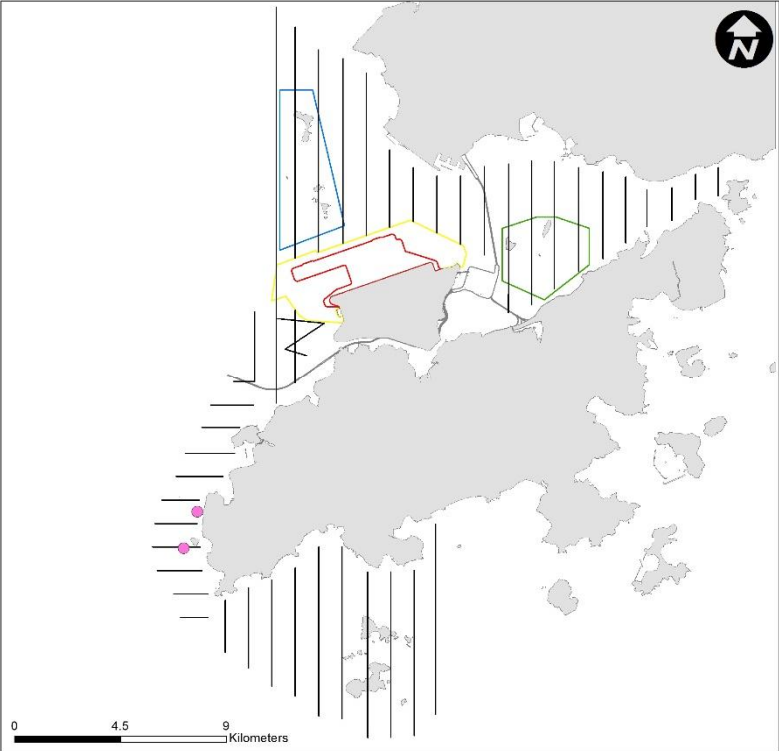


SLMM034

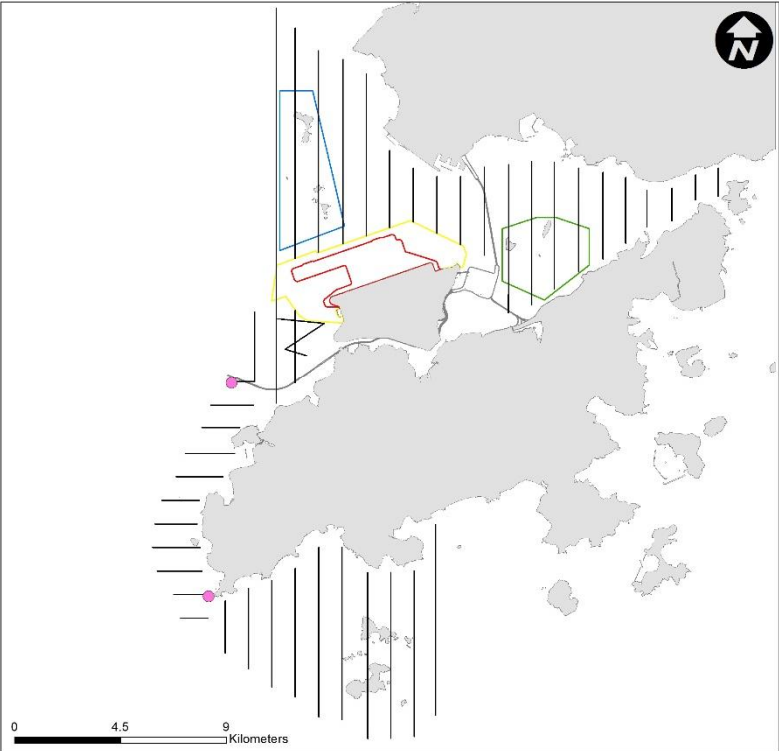




SLMM040



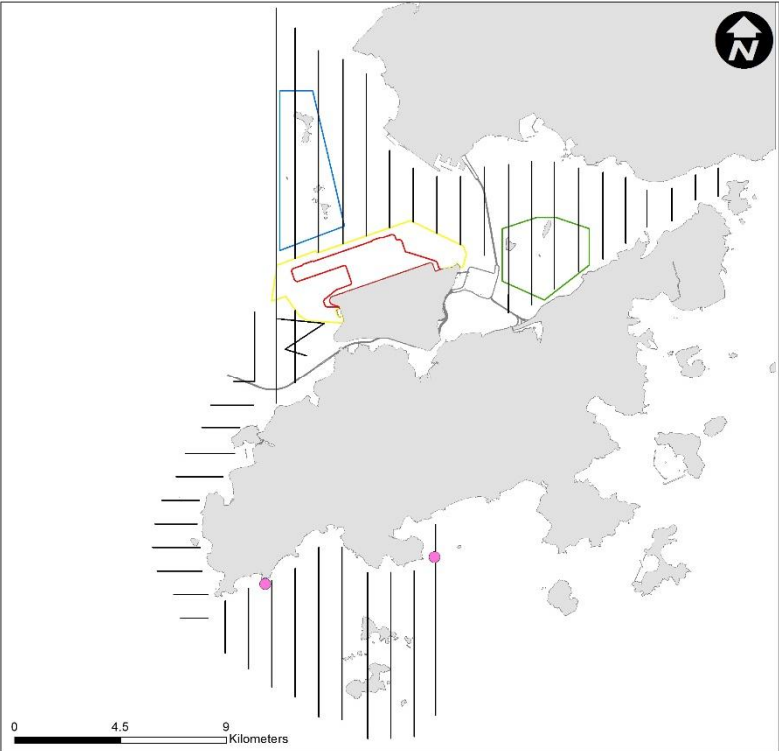
SLMM045



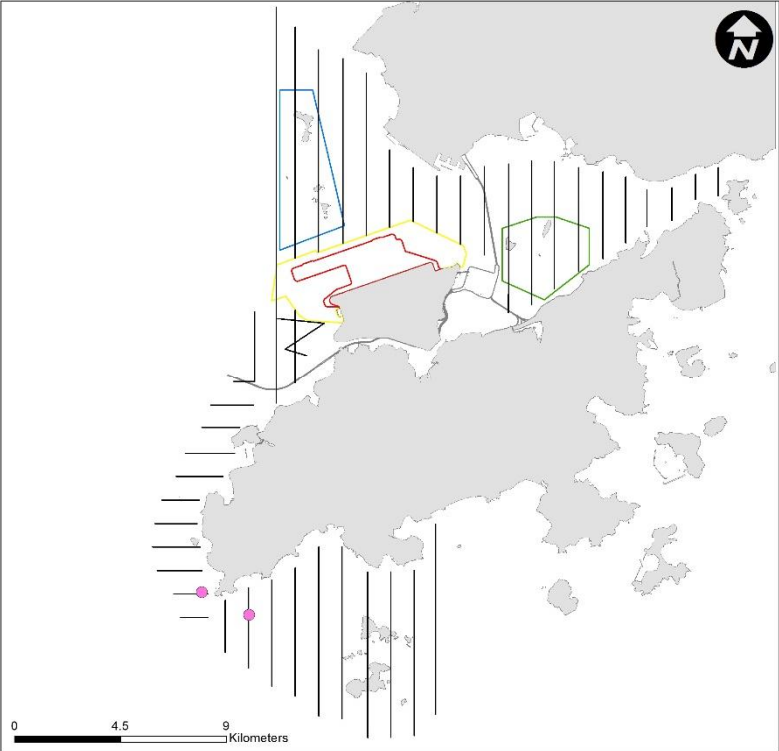
SLMM050



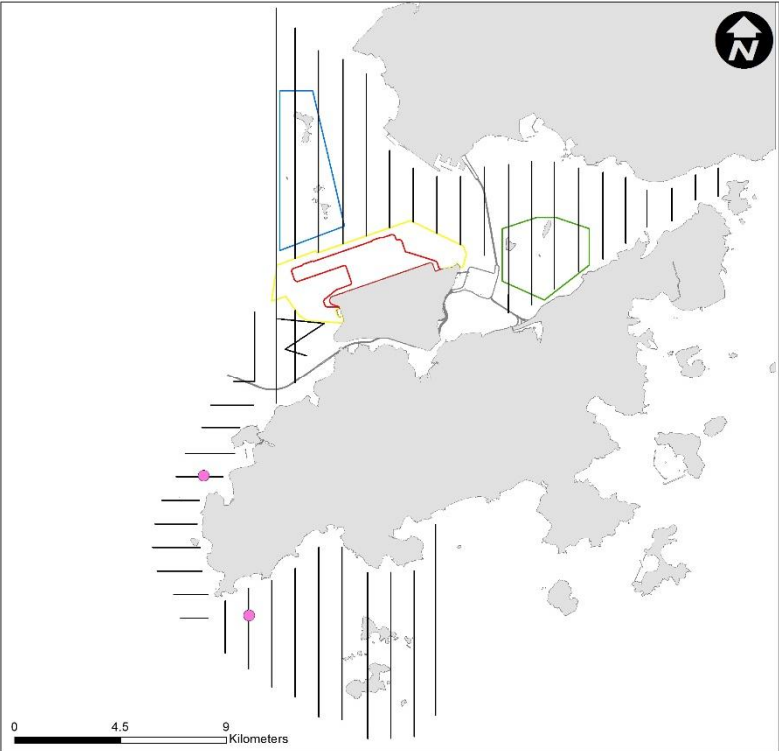
SLMM054



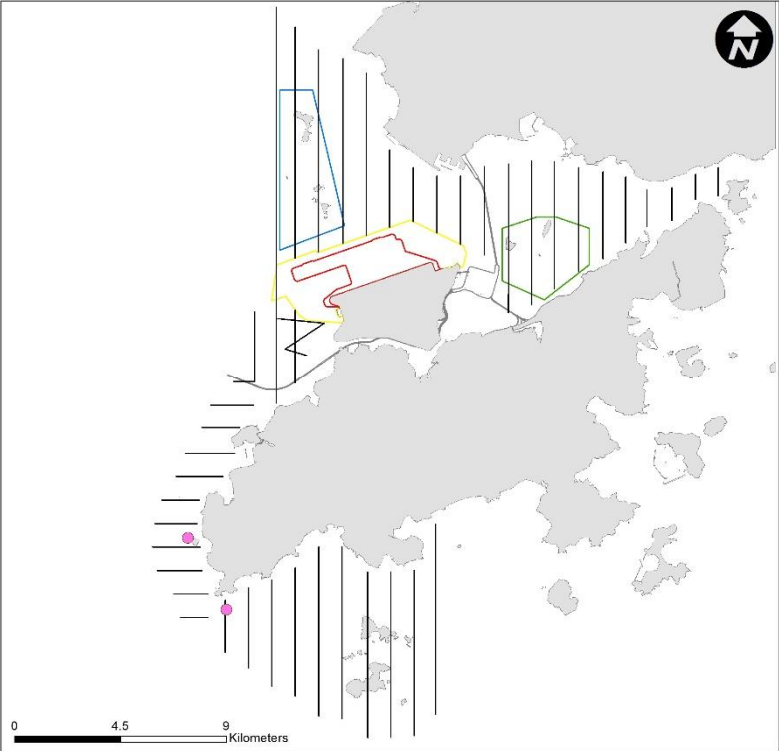
WLMM001



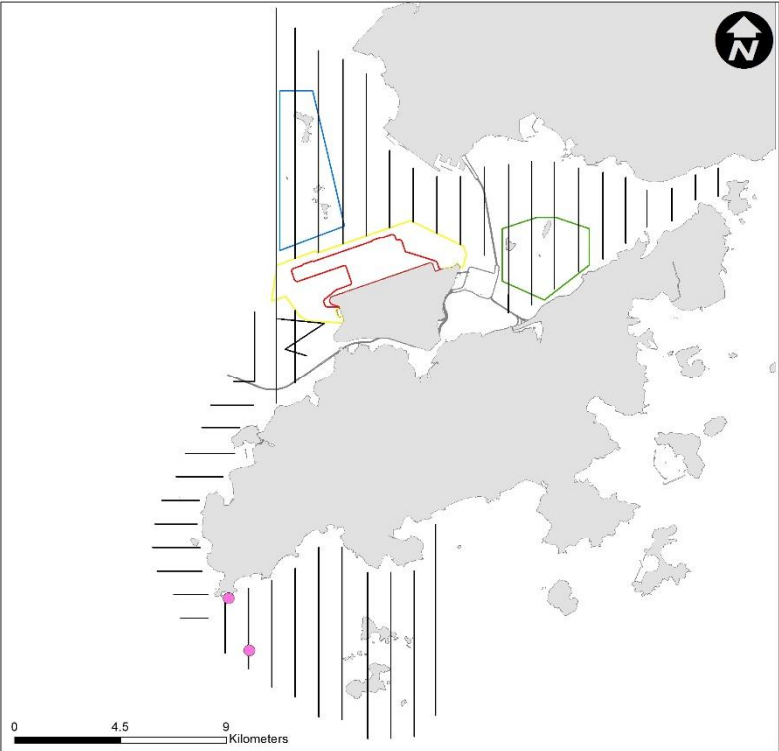
WLMM003



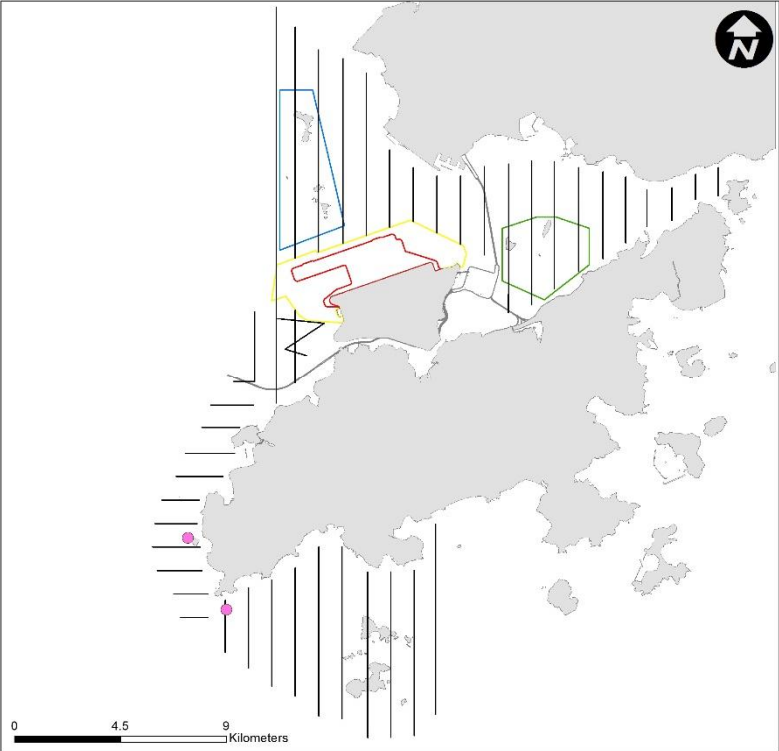
WLMM006



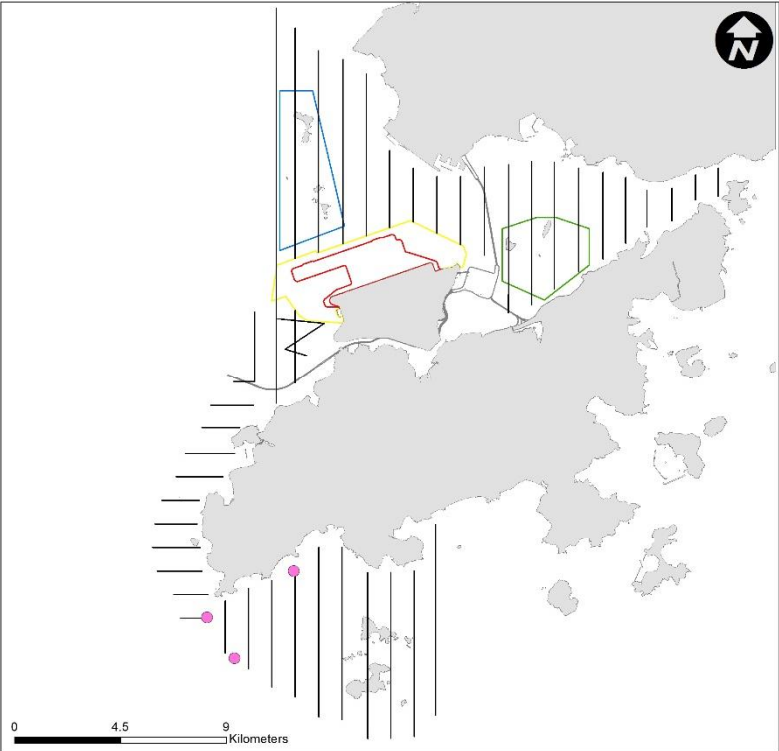
WLMM008



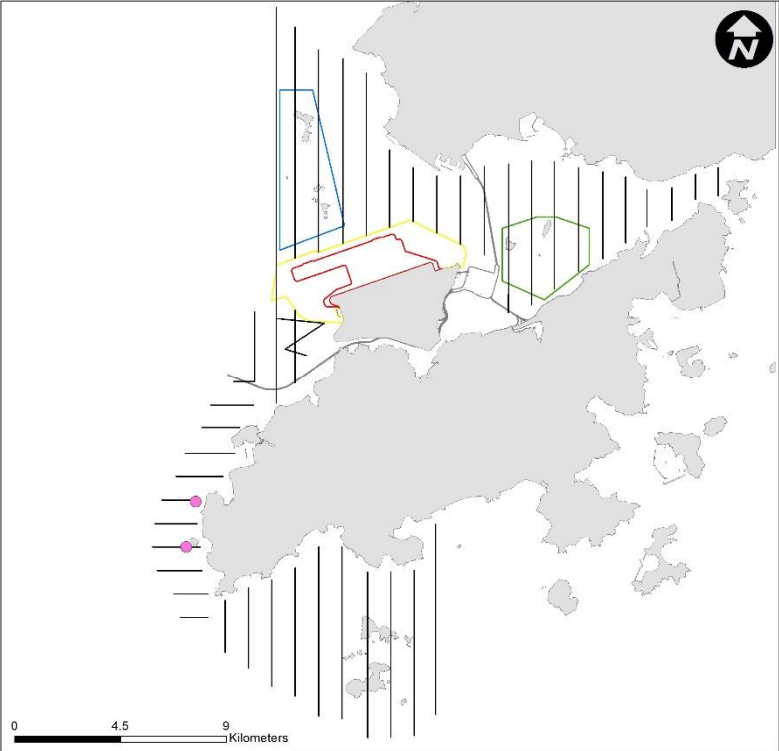
WLMM009



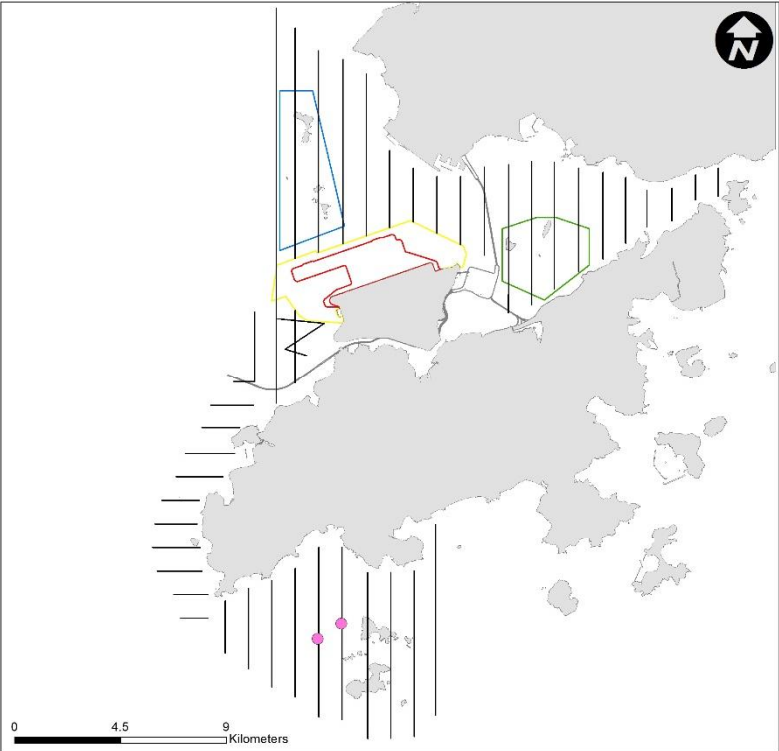
WLMM011



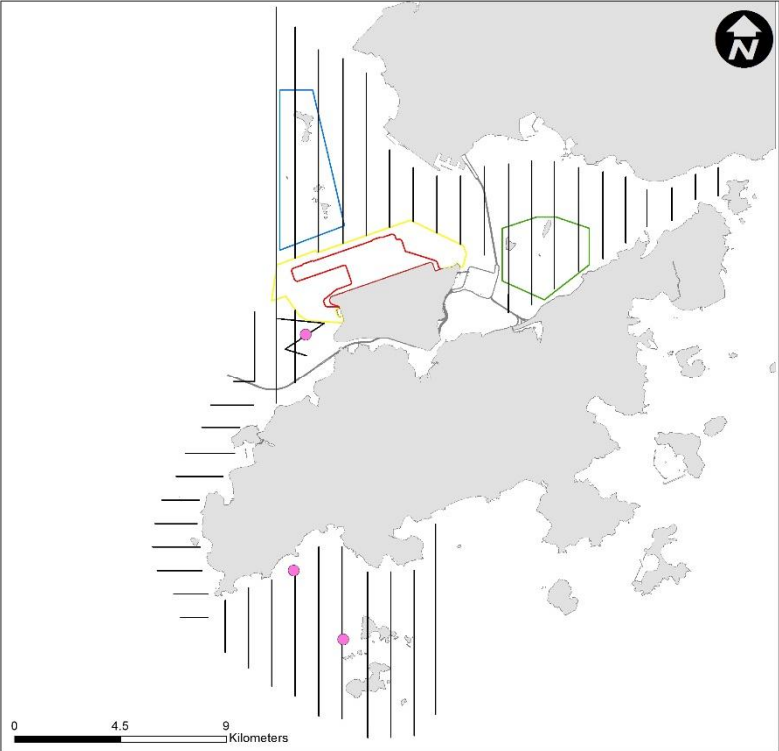
WLMM015



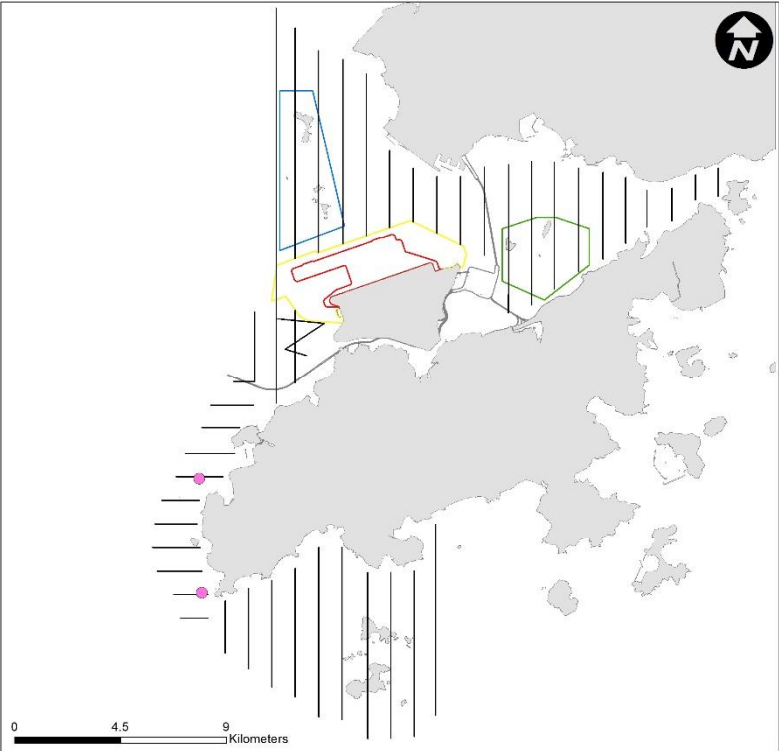
WLMM020



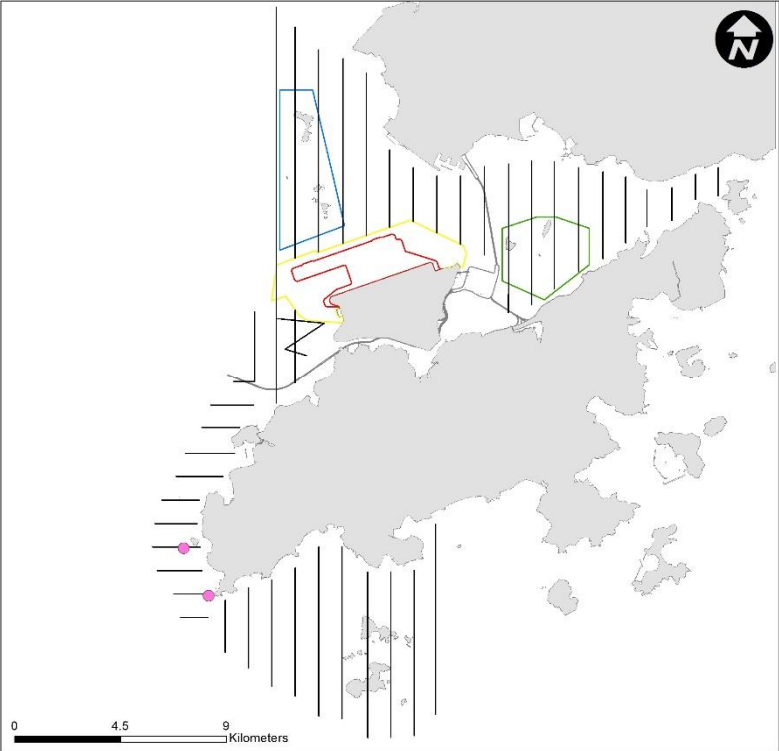
WLMM027



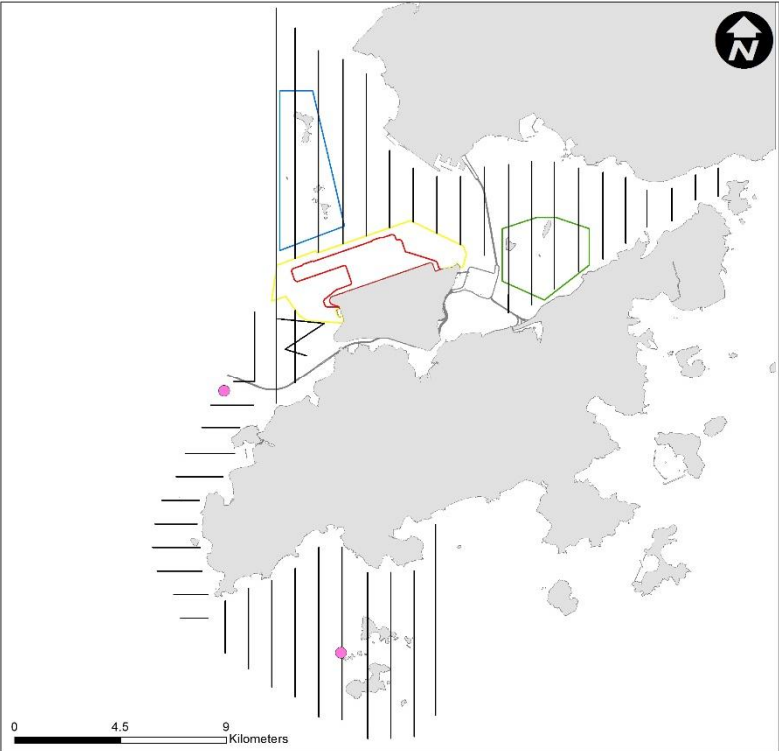
WLMM028



WLMM043

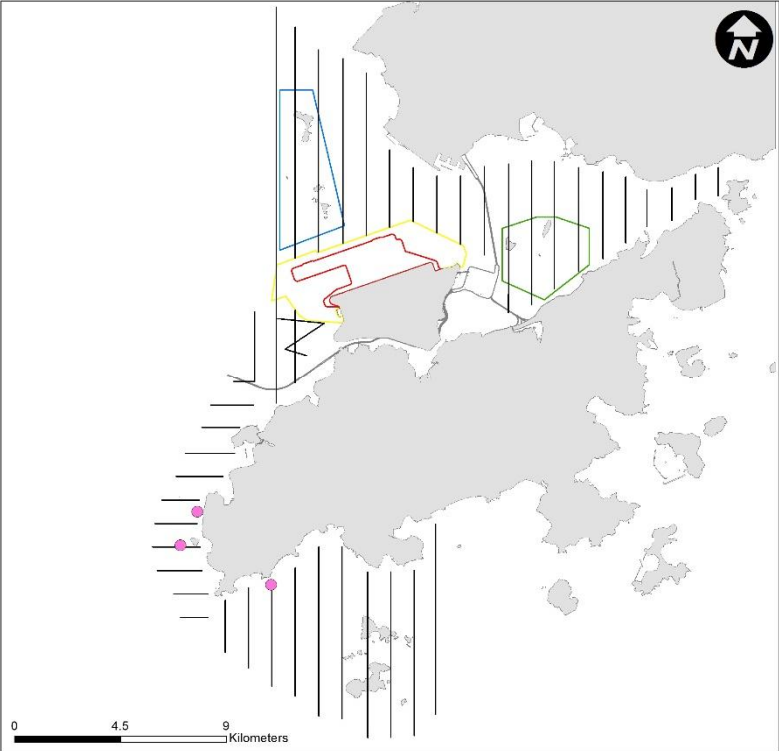


WLMM046

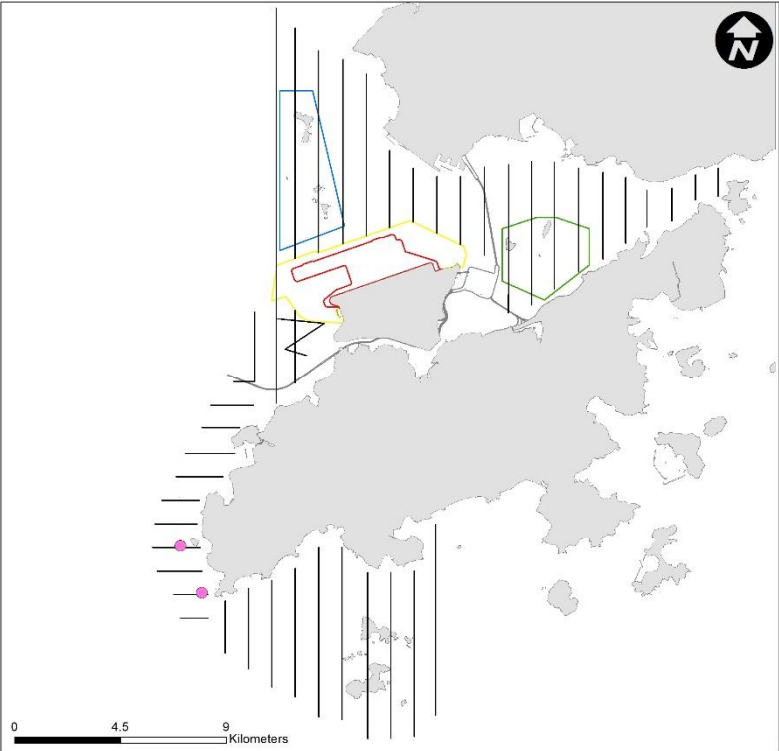




WLMM079



WLMM100



WLMM101



## CWD Land-based Theodolite Tracking

## CWD Groups by Survey Date

Date	Station	Start	End	Duration	Beaufort	Visibility	No. of Focal Follow	Dolphin Group Size
5/Jul/17	Lung Kwu Chau	8:39	14:39	6:00	2-4	1	0	N/A
10/Jul/17	Lung Kwu Chau	8:44	14:44	6:00	2	2	5	1-6
14/Jul/17	Lung Kwu Chau	8:46	14:56	6:10	2-3	1	4	1-4
21/Jul/17	Sha Chau	8:46	14:46	6:00	2-3	2	0	N/A
24/Jul/17	Sha Chau	8:39	14:39	6:00	2	2	0	N/A
17/Aug/17	Lung Kwu Chau	8:39	14:39	6:00	2	2	2	2-4
18/Aug/17	Sha Chau	8:49	14:49	6:00	1-2	2	0	N/A
21/Aug/17	Lung Kwu Chau	9:10	15:10	6:00	2	2-3	6	1-6
22/Aug/17	Lung Kwu Chau	8:43	14:43	6:00	2-4	4	3	2-5
25/Aug/17	Sha Chau	8:46	14:46	6:00	2	2	2	1-2
6/Sep/17	Lung Kwu Chau	8:46	14:26	5:40	2	2-3	13	1-5
18/Sep/17	Lung Kwu Chau	8:42	15:02	6:20	2-3	3	4	1-3
22/Sep/17	Sha Chau	9:11	15:11	6:00	2-3	2	0	N/A
27/Sep/17	Lung Kwu Chau	8:51	14:51	6:00	2-3	3	6	1-4
28/Sep/17	Sha Chau	8:40	14:40	6:00	2	2	0	0

Visibility: 1=Excellent, 2=Good, 3=Fair, 4=Poor